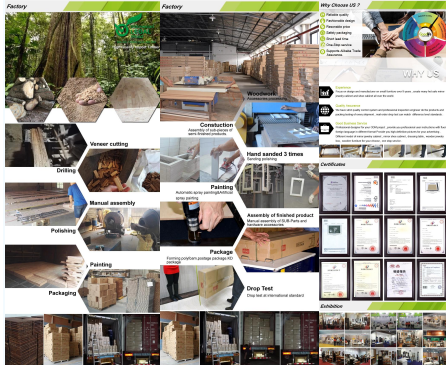




<b>Production Name</b>	Cubex Corner shelving unit	<b>Brand</b>		<b>Code</b>	
<b>Item No.</b>	021173008				
<b>Product size</b>	Ø124x124x160cm				
<b>Colors</b>	Brown				
<b>Accessories</b>	not				
<b>Material</b>	MDF panel, NC painting				
<b>Description</b>	The top shelf, side rack with hangers and our rack with 3 shelves are combined to form this multifunctional full set. It makes full use of the limited corner space and it is ideal place to store shoes, coats, hats, bags, books and accessories. Plastic panels and metal frame make it so easy to take between cities and modern decoration style. Featuring an attractive functional appearance to any home space with an elegant, living area and bedroom. The metal rack for the corner rack with a unique modern design, creating a great mood for the bedroom and bathroom cabinet for the storage, more stable and being durable and can meet your long-term storage needs. The support bar at the bottom can keep the corner full set stable even when the ground is slightly uneven. Superior design space of the top with thoughtful and delicate painted design, convenient storage to prevent stains from falling (Customer care storage shelf, bottom storage space can clean and dry shoes).				
<b>Package size</b>	Ø124x124x160cm				
<b>Package</b>	E2 packing, 1cabin per 1 carton.				
	Big chest protecting, anti-rust, moisture resistant.				
<b>Carton CBM</b>	0.122m <sup>3</sup>				
<b>MOQ</b>	50pcs	<b>EMQ</b>	50pcs	<b>N.W./G.W.</b>	10.8/12.65KGS
<b>Factory</b>				<b>MOQ</b>	50pcs



**Our Business services:**

1. Your inquiry related to our products or prices will be replied in 12hours in working date.
2. Experience makes us better service and give you related business services.
3. OEM/ODM are welcome, we have over 10 years' experience working with OEM project.
4. We are looking for the sales relations of our OEM, middle income jewelry cabinet.
5. Sales exclusive agent rights have been protect.

**Package Information:**

1. Forming polyfoam for the post package.
2. Inside strong polyfoam are used for safe package during transportation.
3. assembled list and User Manual are available for each cabinet.

**Production lead time:**

1. 25-30 days after received deposit.
2. Normal on production line production lead time is 15days after received deposit.