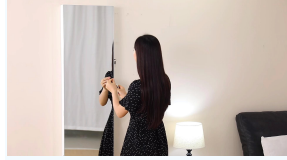


1. With full length dressing mirror
2. The cabinet door with mirror, the side groove design is easy to open, and the back of the door and the cabinet body have multi-layer racks to meet the storage needs of different accessories
3. Cabinet with side hook lock
4. Internal storage compartment, can store washes, sunglasses, nail polish, necklaces, rings, jewelry, etc.

<b>Production Name</b>	Floor standing wooden jewelry cabinet with full length dressing mirror	<b>Brand</b>	Goodlife
<b>Item No.</b>	32817152		
<b>Product size</b>	112*74*116cm		
<b>Colors</b>	White/black/brown and customised color is available.		
<b>Function</b>	For storage jewelry		
<b>Material</b>	E1 MDF with solid wood edge; NC painting; DDM mirror fix on table top.		
<b>Package size</b>	112*67*116cm		
<b>Package</b>	KD packing, 1 piece per 1 carton, Poly foam protecting, strong master carton.		
<b>Carton CBM</b>	0.9702m <sup>3</sup>	<b>N.W./G.W.</b>	12.7/14.5KG/CS
<b>MOQ</b>	200pcs	<b>Lead Time</b>	MOQ 10days



**Why Choose US ?**

- ✓ Factory supply
- ✓ Competitive price
- ✓ Quality control
- ✓ Fast delivery
- ✓ On-time service
- ✓ Excellent after-sales

**US** - 10 years experience in furniture manufacturing and export.

**CE** - CE certification for all our products.

**ISO** - ISO9001:2015 certification for our quality management system.

**SGS** - SGS certification for our products.

**SGS** - SGS certification for our factory.



- Our Business services:**
1. Your inquiry related to our products or prices will be replied in 12hours in working date.
  2. Experience sales answer your inquiry and give you related business service.
  3. OEM/ODM are welcome, we have over 10 years' experience working with OEM project.
  4. We are looking for the sales exclusive of our OEM wooden mirror jewelry cabinet.
  5. Sales exclusive agent sales right have been protect.

- Package information:**
1. Forming polyfoam for the post package
  2. 6-side strong polyfoam are used for safe package during transportation.
  3. Assembly List and User Manual are available for each cabinet.

- Production lead time:**
1. 25 ~50 days after received deposit.
  2. Normal on production the production lead time is 15days after received deposit.

