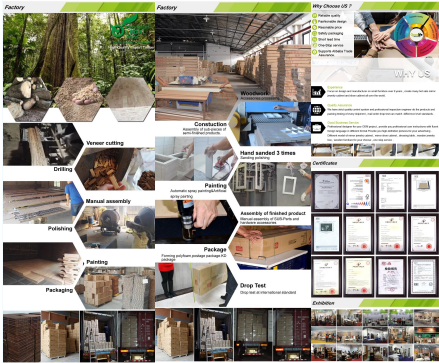


Wooden Dressing Stool Makeup Chair MDF stand  
with painting

---



Production Name	Wooden Dressing Stool Makeup Chair MDF stand with painting		Brand	Goolife	
Item No.	001000000				
Product size	40*16*45cm				
Colors	White/Black/brown and customize color is available.				
Function	Vanity Stool/Wooden Chair				
Material	1. MDF with solid wood edge/PC painting/20mm foam for table top.				
Description	<p>Dressing chair/computer chair, makeup stool, please seat</p> <p>The soft sponge material provides a comfortable table mat/foam for relax after job a one day.</p> <p>Fashion and simple design can match any home or dressing room.</p> <p>Sought solid wood stool with burglar on surface, MDF stand with painting.</p> <p>Composed of solid wood strong legs and flat wood.</p> <p>Soft sponge + three protective cover provides you with a comfortable seat.</p> <p>Elegant design suitable for a variety of dressing drawers.</p> <p>The stand with anti-slip, with padding to protect the floor from scratches.</p>				
Package size	40*16*45 CM				
Package	30 packing, 30 pack per 1 carton. Buy from protecting, strong master carton.				
Carton CM	52*28*67		N.W./G.W.	3.5/4.2625	
MOQ	10000	MOQ	1000	Others	



**Our Business services:**

1. Your inquiry related to our products or prices will be replied in 12 hours in working date.
2. Experience sales answer your inquiry and give you related business service.
3. OEM/ODM are welcome, we have over 10 years' experience working with OEM project.
4. We are looking for the sales exclusive of our OEM wooden entry jewelry cabinet.
5. Sales exclusive agent sales right have been protect.

**Package Information:**

1. Forming polythene for the post package.
2. 6-side strong polythene are used for safe package during transportation.

**Assembled kit and User Manual** are available for each cabinet.

**Production lead time:**

1. 25-30 days after received deposit.
2. Normal on production line production lead time is 15 days after received deposit.