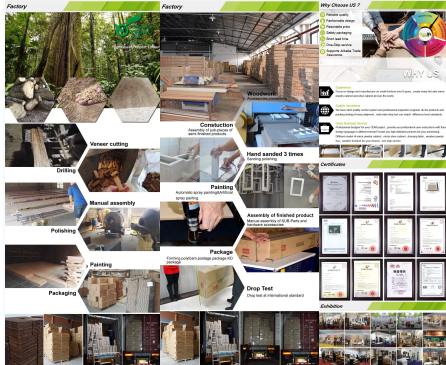




Production Name	Wooden Corner Wardrobe	Brand		Code	
Item No.	021112006				
Product size	101x101x170cm				
Colors	Brown				
Function	Ward				
Material	MDF panel, NC painting				
Description	<p>The wardrobe is made of high-quality wood with a natural finish. It features a hanging rail, shelves, and a circular table top. The wardrobe is designed to be functional and stylish, with a modern look that fits into any interior design. The wardrobe is made of high-quality wood with a natural finish. It features a hanging rail, shelves, and a circular table top. The wardrobe is designed to be functional and stylish, with a modern look that fits into any interior design.</p>				
Package size	101x101x170cm				
Package	101x101x170cm				
Carton CBM	1.120m³				
MOQ	1000				
Factory		MOQ		MOQ	



- Our Business services:**
1. Your inquiry related to our products or prices will be replied in 12 hours in working date.
 2. Experience makes us better and gives you related business services.
 3. OEM/ODM are welcome, we have over 10 years' experience working with OEM project.
 4. We are looking for the sales partners of our OEM products across jewelry cabinet.
 5. Sales exclusive agent rights have been protected.
- Package Information:**
1. Forming plywood for the post package.
 2. Inside strong protection are used for safe package during transportation.
 3. Detailed list and User Manual are available for each cabinet.
- Production lead time:**
1. 25-30 days after received deposit.
 2. Normal on production line production lead time is 15 days after received deposit.