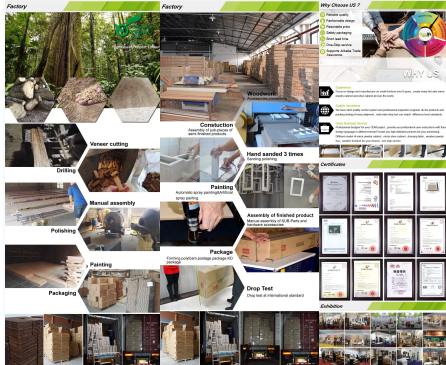




<b>Production Name</b>	Wardrobe Corner painting finished	<b>Brand</b>		<b>Code</b>	
<b>Item No.</b>	0124712006				
<b>Product size</b>	1012x1012x150cm				
<b>Colors</b>	Brown				
<b>Accessories</b>	and				
<b>Material</b>	MDF panel, NC painting				
<b>Description</b>	<p>The top shelf, shoe rack with bench and seat with 3 shelves are combined to form this multifunctional full set. It makes full use of the limited corner space and it is ideal place to store shoes, coats, hats, bags, belts and accessories.          Round panel and round table make it so easy to clean between crevices and modern decorative style. Featuring an attractive functional combination to any home space such as entrance, living area and bedroom.          The hand rail for the corner seat with a spacious seat cushion, sliding groove, smooth rail for shoes, belt and hat and modern cabinet for the storage, more stable and being durable and can meet your long-term storage needs.          The support foot at the bottom can keep the corner full set stable even when the ground is slightly uneven. Spacious storage space at the top with thoughtful and delicate painted design, convenient storage to prevent stains from falling (Customer care storage shelf, bottom storage space can clean and dry shoes).</p>				
<b>Package size</b>	1012x1012x150				
<b>Package</b>	EQ packing, 1 cabinet per 1 carton.				
	EQ chest protecting, warning, warning cartons.				
<b>Carton CBM</b>	1.122m <sup>3</sup>	<b>N.W./G.W.</b>		10.812.658KG	
<b>MOQ</b>	50sets	<b>HSNO</b>	9509	<b>HSNO</b>	9509



**Our Business services:**

1. Your inquiry related to our products or prices will be replied in 12hours in working date.
2. Experience makes us better service and give you related business services.
3. OEM/ODM are welcome, we have over 10 years' experience working with OEM project.
4. We are looking for the sales relations of our OEM, middle income jewelry cabinet.
5. Sales exclusive agent rights have been protect.

**Package Information:**

1. Forming polyfoam for the post package.
2. Inside strong polyfoam are used for safe package during transportation.
3. assembled list and User Manual are available for each cabinet.

**Production lead time:**

1. 25-30 days after received deposit.
2. Normal on production line production lead time is 15days after received deposit.